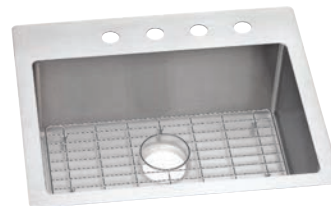


UNIVERSAL MOUNT SINK KITS

Slim Rim feature allows the sink to be installed as an undermount or top mount. One bottom grid included with each sink.



NEW! RVSR13169BG

Sink kit includes: RVSR13169 Sink and CTBG0909SS Bottom Grid

Gauge: 18 | **Finish:** Polished satin finish
Overall Dimensions: 13" x 16"
Bowl: 10½" x 10¾" x 9" | **Drain Opening:** 3½"
Faucet Holes: 1, 2, MR2 or 3
Undercoating: Sound dampening pad with full spray undercoating
Minimum Cabinet Size: 18"

Optional Accessories

Drain
S1

NEW! RVSR15159BG

Sink kit includes: RVSR15159 Sink and CTBG1108SS Bottom Grid

Gauge: 18 | **Finish:** Polished satin finish
Overall Dimensions: 15" x 15"
Bowl: 12½" x 9¾" x 9" | **Drain Opening:** 3½"
Faucet Holes: 1, 2, MR2 or 3
Undercoating: Sound dampening pad with full spray undercoating
Minimum Cabinet Size: 24"

Optional Accessories

Drain
S1

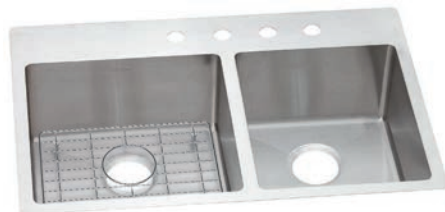
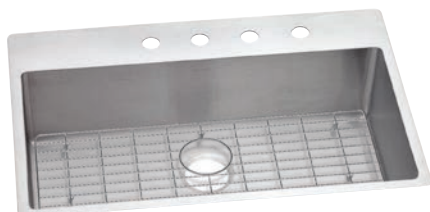
NEW! RVSR25229BG

Sink kit includes: RVSR25229 Sink and CTBG2115SS Bottom Grid

Gauge: 18 | **Finish:** Polished satin finish
Overall Dimensions: 25" x 22"
Bowl: 22½" x 16¾" x 9" | **Drain Opening:** 3½"
Faucet Holes: 1, 2, FR2, MR2, 3, 4 or 5
Undercoating: Sound dampening pad with full spray undercoating
Minimum Cabinet Size: 27"

Optional Accessories

Drain
S1



NEW! RVSR33229BG

Sink kit includes: RVSR33229 Sink and CTBG2915SS Bottom Grid

Gauge: 18 | **Finish:** Polished satin finish
Overall Dimensions: 33" x 22"
Bowl: 30½" x 16¾" x 9" | **Drain Opening:** 3½"
Faucet Holes: 1, 2, FR2, ML2, MR2, 3, 4 or 5
Undercoating: Sound dampening pad with full spray undercoating
Minimum Cabinet Size: 36"

Optional Accessories

Drain
S1

NEW! RVSR033229RBG

Sink kit includes: RVSR033229R Sink and CTBG1515SS Bottom Grid (Large Bowl)

Gauge: 18 | **Finish:** Polished satin finish
Overall Dimensions: 33" x 22"
Large Bowl: 16" x 16¾" x 9"
Small Bowl: 13½" x 16¾" x 9" | **Drain Opening:** 3½"
Faucet Holes: 1, 2, FR2, MR2, 3, 4 or 5
Undercoating: Sound dampening pad with full spray undercoating
Minimum Cabinet Size: 36"

Optional Accessories

Drain Bottom Grid
S1 CTBG1215SS

NEW! RVSR33229BG

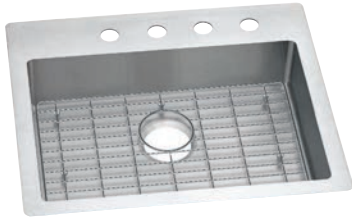
Sink kit includes: RVSR33229 Sink and CTBG1315SS Bottom Grid

Gauge: 18 | **Finish:** Polished satin finish
Overall Dimensions: 33" x 22"
Each Bowl: 14¾" x 16¾" x 9" | **Drain Opening:** 3½"
Faucet Holes: 1, 2, FR2, MR2, 3, 4 or 5
Undercoating: Sound dampening pad with full spray undercoating
Minimum Cabinet Size: 36"

Optional Accessories

Drain
S1

ADA COMPLIANT TOP MOUNT SINK KITS



NEW! RVSRAD25226BG

Sink kit includes: RVSRAD25226 Sink and CTOBG2115SS Bottom Grid

Gauge: 18 | **Finish:** Polished satin finish

Overall Dimensions: 25" x 22"

Bowl: 22½" x 16¾" x 6" | **Drain Opening:** 3½"

Faucet Holes: 1, 2, FR2, MR2, 3, 4 or 5

Undercoating: Sound dampening pad with full spray undercoating

Minimum Cabinet Size: 36"

Optional Accessories

Drain
S1



NEW! RVSRAD33226BG

Sink kit includes: RVSRAD33226 Sink and CTOBG1315SS Bottom Grid

Gauge: 18 | **Finish:** Polished satin finish

Overall Dimensions: 33" x 22"

Each Bowl: 14¾" x 16¾" x 6" | **Drain Opening:** 3½"

Faucet Holes: 1, 2, FR2, MR2, 3, 4 or 5

Undercoating: Sound dampening pad with full spray undercoating

Minimum Cabinet Size: 36"

Optional Accessories

Drain
S1

CARRINGTON



The Carrington top mount series includes a very broad selection of 20 gauge, nickel-bearing stainless steel sinks. Their outstanding Diamond-Glo finish, extra bowl capacity and special features will stimulate creativity in any kitchen design.



CLS2522D8DG

Gauge: 20 | **Finish:** Diamond-Glo
Overall Dimensions: 25" x 22"
Bowl: 21" x 15¾" x 8"
Faucet Holes: 1, 2, MR2, 3, 4 or 5
Drain Opening: 3½"
Undercoating: Fully undercoated
Minimum Cabinet Size: 30"

Optional Accessories

Drain	Cutting Board	Bottom Grid
S1	RCB1516	GBG2115SS



CLS2522D7DG

Gauge: 20 | **Finish:** Diamond-Glo
Overall Dimensions: 25" x 22"
Bowl: 21" x 15¾" x 7"
Faucet Holes: 1, 2, MR2, 3, 4 or 5
Drain Opening: 3½"
Undercoating: Fully undercoated
Minimum Cabinet Size: 30"

Optional Accessories

Drain	Cutting Board	Bottom Grid
S1	RCB1516	GBG2115SS



CLSSR2722D8DG

Gauge: 20 | **Finish:** Diamond-Glo
Overall Dimensions: 27" x 22"
Bowl: 24" x 16" x 8"
Faucet Holes: 1, 2, MR2, 3, 4 or 5
Drain Opening: 3½"
Undercoating: Fully undercoated
Minimum Cabinet Size: 30"

Optional Accessories

Drain	Cutting Board	Bottom Grid
S1	CB1713	GBG2416SS



CLD3322D8DG

Gauge: 20 | **Finish:** Diamond-Glo
Overall Dimensions: 33" x 22"
Each Bowl: 14" x 15¾" x 8"
Faucet Holes: 1, 2, 3 or 4
Drain Opening: 3½"
Undercoating: Fully undercoated
Minimum Cabinet Size: 36"

Optional Accessories

Drain	Cutting Board	Bottom Grid
S1	RCB1516	GBG1415SS



CLD3322D7DG

Gauge: 20 | **Finish:** Diamond-Glo
Overall Dimensions: 33" x 22"
Each Bowl: 14" x 15¾" x 7"
Faucet Holes: 1, 2, 3 or 4
Drain Opening: 3½"
Undercoating: Fully undercoated
Minimum Cabinet Size: 36"

Optional Accessories

Drain	Cutting Board	Bottom Grid
S1	RCB1516	GBG1415SS

HOSPITALITY SINK

Add convenience. The sink is 7" deep and features a Diamond-Glo finish that will add long-lasting elegance to entertainment areas at home or in office settings.



CLS1515D7DGL

Gauge: 20 | **Finish:** Diamond-Glo
Overall Dimensions: 15" x 15"
Bowl: 12" x 9¼" x 7"
Faucet Holes: 1, 2 or 3
Drain Opening: 3½"
Undercoating: Fully undercoated
Minimum Cabinet Size: 18"

Optional Accessories

Drain
S1



PURITAN



The Puritan top mount series offers quality-conscious buyers a wide variety of choices not often found at this price point. All models are made from 300 series quality stainless steel and the sinks feature Revere's soft satin finish. To top off the package, Puritan models are available in a variety of depths from 6½" to 8" deep. Each Puritan series sink includes bottom undercoating that decreases noise and reduces condensation. Puritan – an unusual value at an affordable price.



PBLS2522D8SN

Gauge: 22 | **Finish:** Soft Satin
Overall Dimensions: 25" x 22"
Bowl: 21" x 15¾" x 8"
Faucet Holes: 1, 2, 3 or 4
Drain Opening: 3½"
Undercoating: Spray undercoating
Minimum Cabinet Size: 30"

Optional Accessories

Drain	Bottom Grid
S1	GBG2115SS



PBLS2522D7SN

Gauge: 22 | **Finish:** Soft Satin
Overall Dimensions: 25" x 22"
Bowl: 21" x 15¾" x 7"
Faucet Holes: 1, 2, 3 or 4
Drain Opening: 3½"
Undercoating: Spray undercoating
Minimum Cabinet Size: 30"

Optional Accessories

Drain	Bottom Grid
S1	GBG2115SS



PBLS2522D65SN†

Gauge: 22 | **Finish:** Soft Satin
Overall Dimensions: 25" x 22"
Bowl: 21" x 15¾" x 6½"
Faucet Holes: 1, 2, 3 or 4
Drain Opening: 3½"
Undercoating: Spray undercoating
Minimum Cabinet Size: 30"

Optional Accessories

Drain	Bottom Grid
S1	GBG2115SS



PBLS1722D7SN

Gauge: 22 | **Finish:** Soft Satin
Overall Dimensions: 17" x 22"
Bowl: 14" x 15¾" x 7"
Faucet Holes: 3
Drain Opening: 3½"
Undercoating: Spray undercoating
Minimum Cabinet Size: 21"

Optional Accessories

Drain	Bottom Grid
S1	GBG1415SS

†Also available nested 50 units per shipping container as a bulk 50 pack. ††Also available nested 12 units per shipping container as a bulk 12 pack.
 †††Also available nested 18 units per shipping container as a bulk 18 pack.

PURITAN



A Value Line with
a Wide Selection
of Choices



PBLD3322D8SN

Gauge: 22 | **Finish:** Soft Satin
Overall Dimensions: 33" x 22"
Each Bowl: 14" x 15¾" x 8"
Faucet Holes: 1, 2, 3 or 4
Drain Opening: 3½"
Undercoating: Spray undercoating
Minimum Cabinet Size: 36"

Optional Accessories

Drain	Bottom Grid
S1	GBG1415SS



PBLD3322D7SN

Gauge: 22 | **Finish:** Soft Satin
Overall Dimensions: 33" x 22"
Each Bowl: 14" x 15¾" x 7"
Faucet Holes: 1, 2, 3 or 4
Drain Opening: 3½"
Undercoating: Spray undercoating
Minimum Cabinet Size: 36"

Optional Accessories

Drain	Bottom Grid
S1	GBG1415SS



PBLD3322D65SN†

Gauge: 22 | **Finish:** Soft Satin
Overall Dimensions: 33" x 22"
Each Bowl: 14" x 15¾" x 6½"
Faucet Holes: 1, 2, 3 or 4
Drain Opening: 3½"
Undercoating: Spray undercoating
Minimum Cabinet Size: 36"

Optional Accessories

Drain	Bottom Grid
S1	GBG1415SS



FH3319D8SN††

Gauge: 20 | **Finish:** Soft Satin
Overall Dimensions: 33" x 19"
Each Bowl: 14" x 14" x 8"
Faucet Holes: 1, 2, MR2, 3 or 4
Drain Opening: 3½"
Undercoating: Spray undercoating
Minimum Cabinet Size: 36"

Optional Accessories

Drain	Bottom Grid
S1	GBG1414SS



FH3319D7SN†††

Gauge: 20 | **Finish:** Soft Satin
Overall Dimensions: 33" x 19"
Each Bowl: 14" x 14" x 7"
Faucet Holes: 1, 2, 3 or 4
Drain Opening: 3½"
Undercoating: Spray undercoating
Minimum Cabinet Size: 36"

Optional Accessories

Drain	Bottom Grid
S1	GBG1414SS



KITCHEN QUEEN



The Kitchen Queen top mount sink series is designed to satisfy the need for good, dependable quality at an economical price. Fabricated from 300 series nickel-bearing stainless steel, the Kitchen Queen series features a buffed satin finish and undercoating applied to the bottom to dampen sound and reduce condensation.



KQ2522D6PB[†]

Gauge: 23 | **Finish:** Buffed Satin
Overall Dimensions: 25" x 22"
Bowl: 21" x 15¾" x 6"
Faucet Holes: 1, 2, 3 or 4
Drain Opening: 3½"
Undercoating: Spray undercoating
Minimum Cabinet Size: 20"

Optional Accessories

Drain	Bottom Grid
S1	GBG2115SS

KQ1722D6PB

Gauge: 23 | **Finish:** Buffed Satin
Overall Dimensions: 17" x 22"
Bowl: 14" x 15¾" x 6"
Faucet Holes: 3 or OS4
Drain Opening: 3½"
Undercoating: Spray undercoating
Minimum Cabinet Size: 21"

Optional Accessories

Drain	Bottom Grid
S1	GBG1415SS

KQ1515D5BFS2

Drain Opening: 2"
Sink kit includes: KQ1515D5PBS Hospitality Sink, LKA2475LF Faucet and S2 Drain

KQ1515D5PBS

Drain Opening: 2"

Gauge: 23 | **Finish:** Buffed Satin
Overall Dimensions: 15" x 15"
Bowl: 12" x 10" x 5"
Faucet Holes: 1, 2 or 3
Undercoating: Spray undercoating
Minimum Cabinet Size: 18"

Optional Accessories

Drain
S1 (KQ1515D5PBL)
S2 (KQ1515D5PBS)



FH3319D6SB[†]

Gauge: 23 | **Finish:** Buffed Satin
Overall Dimensions: 33" x 19"
Bowl: 14" x 14" x 6"
Faucet Holes: 1, 2, 3 or 4
Drain Opening: 3½"
Undercoating: Spray undercoating
Minimum Cabinet Size: 36"

Optional Accessories

Drain	Bottom Grid
S1	GBG1414SS

KQ3322D6PB[†]

Gauge: 23 | **Finish:** Buffed Satin
Overall Dimensions: 33" x 22"
Bowl: 14" x 15¾" x 6"
Faucet Holes: 1, 2, 3 or 4
Drain Opening: 3½"
Undercoating: Spray undercoating
Minimum Cabinet Size: 36"

Optional Accessories

Drain	Bottom Grid
S1	GBG1415SS

[†]Also available nested 50 units per shipping container as a bulk 50 pack. All dimensions in inches. To convert to millimeters, multiply by 25.4.